

The City of Edinburgh Children and Families Department funds the Therapy Inclusion Partnership.

We are a team consisting of an Occupational therapist, Speech and Language Therapist, Physiotherapist and an Administrative Assistant.

Our remit is:

- To support education staff working with children who have additional learning needs, in mainstream secondary, primary schools and nurseries.
- To give practical advice so that agreed programmes of learning can be carried out in school.
- To identify the needs of staff.
- To produce an advice manual which will be available to all education staff.

We can contribute to:



Training of Staff

Developmental Motor Skills Programmes



Physical Education



Social Inclusion Opportunities

Early literacy experiences



Communication

Independence and confidence building

Fine Motor skills



I.E.P.s

We feel our input would be most useful for education staff who need advice from Physiotherapist, Occupational and Speech and Language Therapists in order to support the additional learning needs of a children within a mainstream secondary / primary / nursery setting.

We aim to work alongside education staff and the child's named therapists to promote learning opportunities, which enable the child to be more fully included in the mainstream setting.



We will be running an Inclusion Forum and workshops each year, where education staff and therapists can meet to exchange ideas.

Physiotherapist
Gill McKelvie

Speech and Language Therapist
Kate Nelson

Occupational Therapist
Mandy Adamson

For further details please contact
the team at:

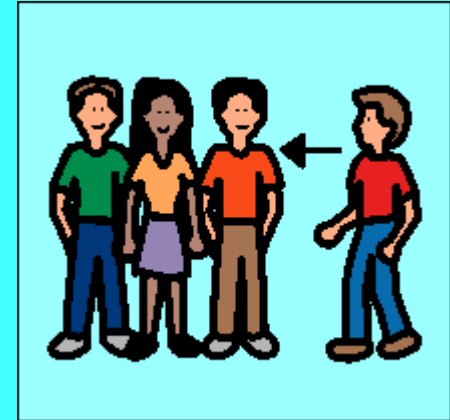
Postal Address:

Therapy Inclusion Partnership
Royal Hospital for Sick Children
20 Millerfield Place
Edinburgh
EH9 1LF
Tel: 0131 536 0036

Email:
Maureen.x.scott@luht.scot.nhs.uk

Resources website: www.asl.scot.nhs.uk

City of Edinburgh



**Therapy
Inclusion
Partnership**